

V / BH / K Series

Single Shaft Shredder



We reserve the right to make technical changes without prior announcement. All rights reserved.
©2019 GENOX RECYCLING TECH (CHINA) CO., LTD.

GENOX

GENOX RECYCLING TECH (CHINA) CO., LTD.
#11 of No.3 Guangzhu road, Dongchong, Nansha, Guangzhou, China
Tel. +86 20 66851345 #810 Fax. +86 20 66851347
e-mail. info@genoxtech.com



www.genoxtech.com

GENOX

Single Shaft Shredder

V Series

V Series Single Shaft Shredders are small - medium size reduction machines suitable for processing a wide range of materials to a uniform particle size. The output products created can often be sold as is, or be sent for further processing through additional equipment (granulators briquetters etc). Throughputs typically range between 300kg/hr – 5,000kg/hr+ depending on the machine model, material type, screen size and application.

Typical applications for this versatile range of shredders include:

- Plastics – Mouldings, Purgings / Lump, Profiles, Films etc.
- Timber / Wood – Pallets, Joiners Waste, Green Waste etc.
- Paper & Cardboard – Confidential Documents, Production Waste, Packaging Materials etc.
- Copper – Household, Automotive, Telecoms and Industrial Cables including S.W.A
- Aluminum – Used Beverage Cans (UBC's), Swarf, Cables etc.
- Textiles – Carpet (Rolls & Tiles), Garments etc.
- Security Destruction – Counterfeit Items, Faulty Goods, Out of Date Stocks etc.
- Foams – Production Waste, Insulation Materials, Product Fillings etc.



Cables



Pipes



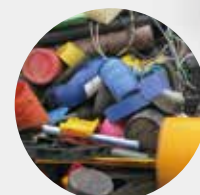
Wood



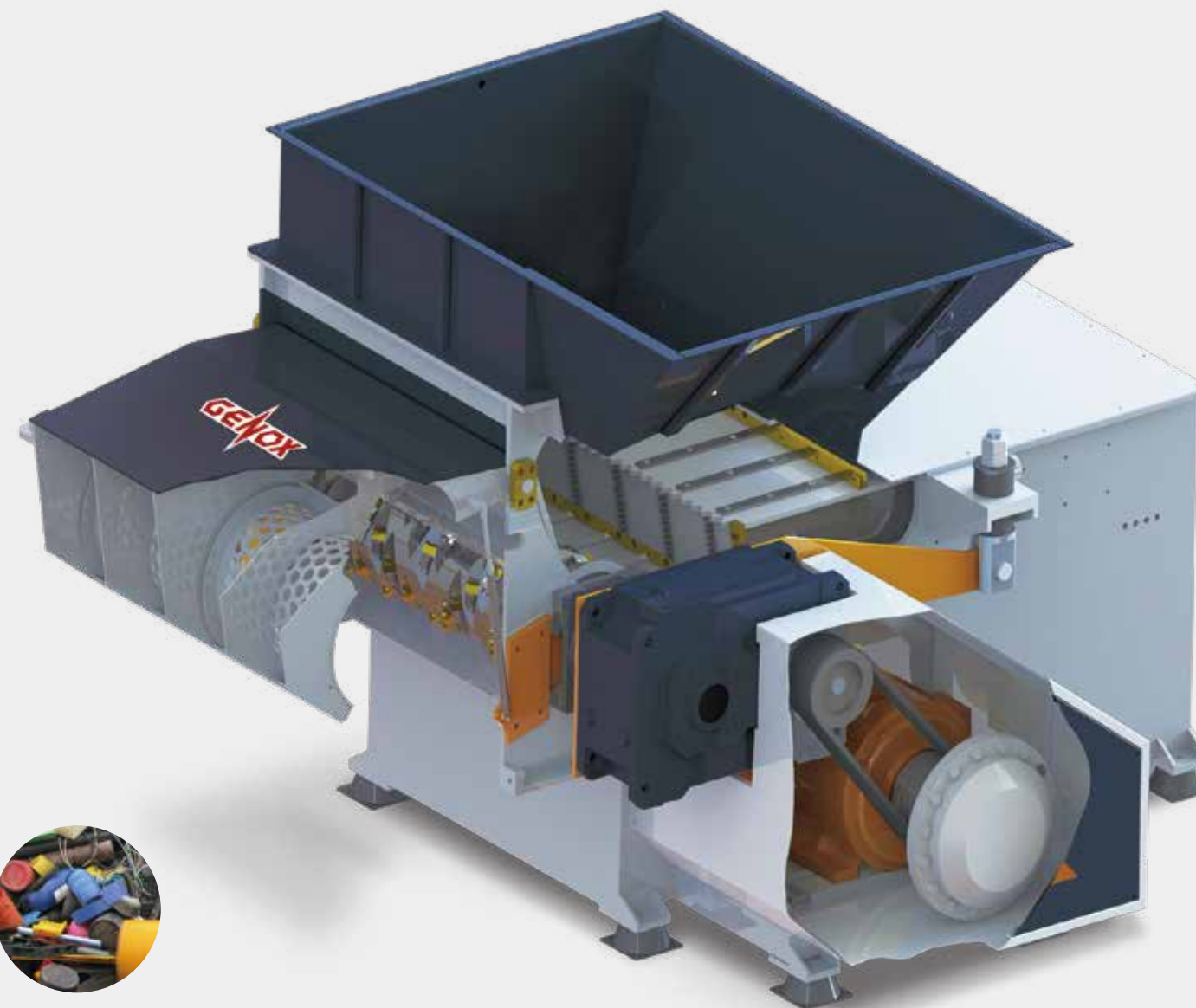
Plastic Lumps



Plastic Frames



Scrap Plastic



V Series		
Model	V600	V800
Dimension (L x W x H) (mm)	1820 x 1300 x 1730	2800 x 1800 x 2080
Hopper Opening (L x H) (mm)	1200 x 1090	1500 x 1430
Discharge Height (mm)	485	565
Rotation Diameter (mm)	Φ 220	Φ 400
Operation Length (mm)	600	800
Rotation Speed (RPM)	80	80
Ram (mm)	500	815
Screen Size(mm)	Φ 40	Φ 40
Number of Rotor Knives	23+4	35+4
Number of Counter Knives	4	2+2
Main Drive (kw)	18	37
Hydraulic Power Pack (kw)	2.25	3.75
Weight (kg)	Approx 1750	Approx4200

V Series		
Model	V1200	V1500
Dimension (L x W x H) (mm)	2800 x 2500 x 2130	2800 x 2750 x 2130
Hopper Opening (L x H) (mm)	1900 x 1430	1080 x 1400
Discharge Height (mm)	565	565
Rotation Diameter (mm)	Φ 400	Φ 400
Operation Length (mm)	1200	1400
Rotation Speed (RPM)	80	80
Ram (mm)	815	815
Screen Size(mm)	Φ 40	Φ 40
Number of Rotor Knives	55+4	78+4
Number of Counter Knives	3+3	3+3
Main Drive (kw)	55	75
Hydraulic Power Pack (kw)	5.5	5.5
Weight (kg)	Approx5300	Approx7300

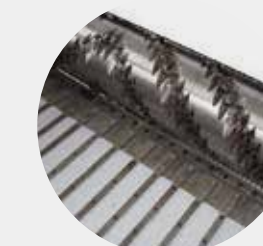
Heavy Duty Single Shaft Shredders

BH Series

BH Series Single Shaft Shredders are heavy duty, reduction machines specifically designed for shredding a wide variety of untreated waste material streams down into either coarse or medium sized fractions. The powerful, wear resistant machine structure is well suited to demanding recycling tasks.



Force Feeding Ram



High Performance Rotor



Hydraulic Opening Design



Classifier Screen



Hydraulic Power Unit



Driving System

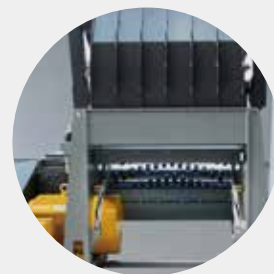
BH Series						
Model	BH1500	BH2000	BH2200	BH2800	BH1800	BH2400
Dimension (L x W x H) (mm)	3710 × 2880 × 2530	3710 × 4150 × 2530	3920 × 4500 × 2720	3920 × 5600 × 2720	4070 × 4070 × 2870	4070 × 4670 × 2870
Hopper Opening (L x H) (mm)	2080 × 1880	2080 × 2380	2380 × 2580	2380 × 3180	2530 × 2180	2530 × 2780
Discharge Height (mm)	720	720	720	720	800	800
Rotation Diameter (mm)	Φ480	Φ480	Φ650	Φ650	Φ800	Φ800
Operation Length (mm)	1500	2000	2240	2840	1790	2390
Rotation Speed (RPM)	80	80	80	80	80	80
Ram (mm)	1100	1100	1100	1100	1100	1100
Number of Rotor Knives	84+6	95+6	109+6	125+6	106+6	124+6
Number of Counter Knives	3+3	4+4	4+4	5+5	3+3	4+4
Main Drive (kW)	90	55+55	90+90	110+110	90+90	132+132
Hydraulic Power Pack (kW)	7.5	11	15	15	11	15
Weight (kg)	Approx 11110	Approx 14800	Approx 18000	Approx 21000	Approx 16000	Approx 20000

Single Shaft Shredder

K Series

K Series Single Shaft Shredders are heavy duty machines suitable for processing a wide range of materials. This range of shredders are ideal for the size reduction of flexible and/or medium hardness, voluminous products often loaded in bales. The fast acting, PLC controlled swing pusher automatically forces material to the rotor according to motor loading, maximizing material throughput. Machine capacities typically range between 1,500kg/hr – 9,000kg/hr+ depending on the model, material type and application.

K Series		
Model	K1500	K2000
Dimension (L x W x H) (mm)	2230 x 3660 x 2970	2230 x 3710 x 2970
Hopper Opening (L x H) (mm)	1360 x 1910	1360 x 2410
Discharge Height (mm)	460	460
Rotation Diameter (mm)	Φ480	Φ480
Operation Length (mm)	1600	2100
Rotation Speed (RPM)	80	80
Ram (mm)	1000	1000
Number of Rotor Knives	88	95
Number of Counter Knives	3+3	4+4
Main Drive (kW)	110	55+55
Hydraulic Power Pack (kW)	11	11
Weight (kg)	Approx 12500	Approx 15000



Maintenance Access Door



Classifier Screen



Intelligent Control Panel



Hydraulic Pusher



Robust Drive & Gearbox



High Performance Rotor